



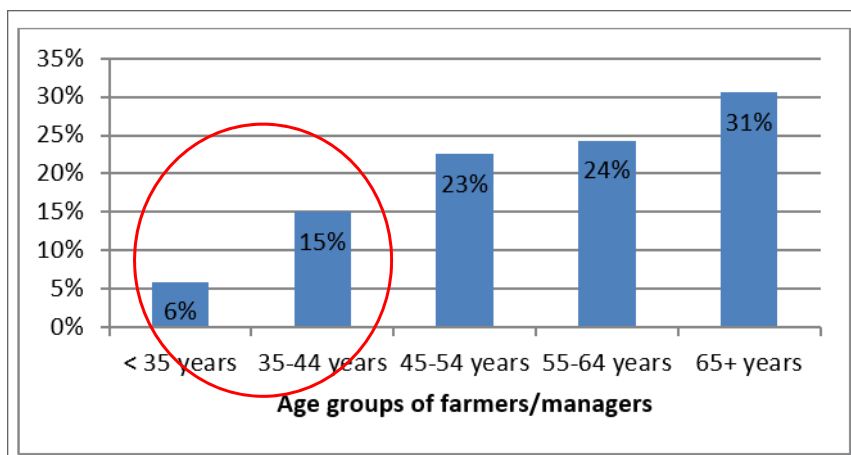
B2B for Smart Farming

Concluding remarks

Josse De Baerdemaeker



EU farmers/ farm managers by age group, 2013



<http://www.ep.europa.eu/stoa>

Skills: Main Issues and Concerns in Europe

- Rural exodus of young people/farmers
- High numbers of those who are NEET*
- Love of natural world vs structural problems: jobs, transport, housing
- Young people need to be able to commit to their future in rural areas
- Knowledge and capital-intensive farming is difficult to start / Many farms are inherited
- *To commit they need to feel 'welcome now'*

*Not in Education, Employment, or Training

Scientific Foresight Unit (STOA) . European Parliamentary
Research Service SCENARIO REPORT: PRECISION
AGRICULTURE AND THE FUTURE OF FARMING IN
EUROPE September 2016, <http://www.ep.europa.eu/stoa/>

KU LEUVEN

Expected skills and technological expertise for a successful farmer (or combination of specialists and farmers) in the future

- Work with robots / automation technology
- Work with data / data skills (data science)
- Choose right technologies or solutions
- Low waste production
- Diverse high-tech production skills
- People management / “people skills”

Scientific Foresight Unit (STOA) . European Parliamentary Research Service
SCENARIO REPORT: PRECISION AGRICULTURE AND THE FUTURE OF
FARMING IN EUROPE September 2016, <http://www.ep.europa.eu/stoa/>

KU LEUVEN

Challenges derived from scenarios:

Scientific foresight steps

1. Technical horizon (this project)
scanning: *unravel complexity*
2. Envisioning: *identify, challenge and expand assumptions*
3. Scenario's: *describe optional scenario's*
4. Legislative Backcasting

Scenario's*:

1. Economic optimism
'Companies rule, global open markets'
2. Global Sustainable Development
'Sustainability rules, government controls'
3. Regional competition
'Regional markets rule'
4. Regional sustainable development
'Regional sustainability rules'

Scientific Foresight Unit (STOA) - European Parliamentary Research Service SCENARIO REPORT: PRECISION AGRICULTURE AND THE FUTURE OF FARMING IN EUROPE September 2016, <http://www.ep.europa.eu/stoa/>

KU LEUVEN

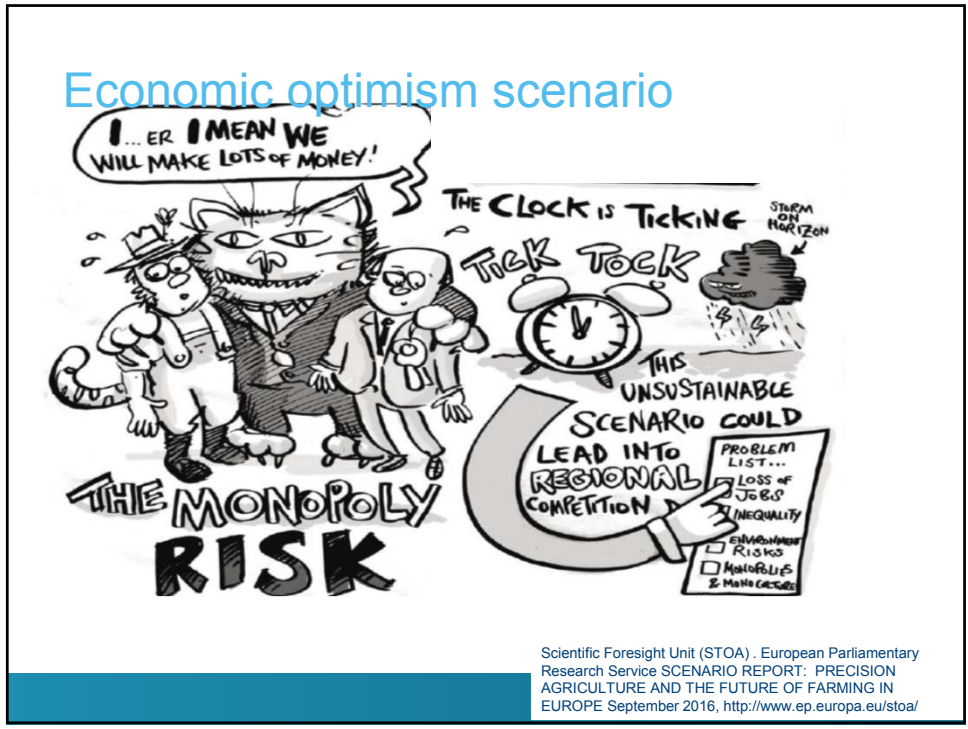
*Details in Scenario Report

Economic optimism scenario

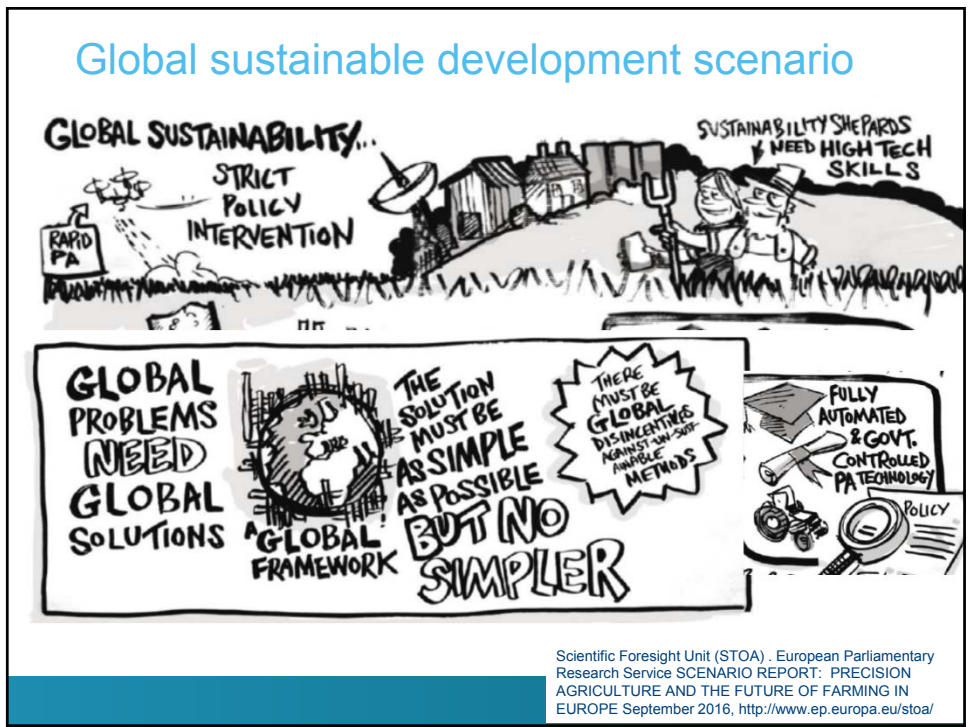


Scientific Foresight Unit (STOA) - European Parliamentary Research Service SCENARIO REPORT: PRECISION AGRICULTURE AND THE FUTURE OF FARMING IN EUROPE September 2016, <http://www.ep.europa.eu/stoa/>

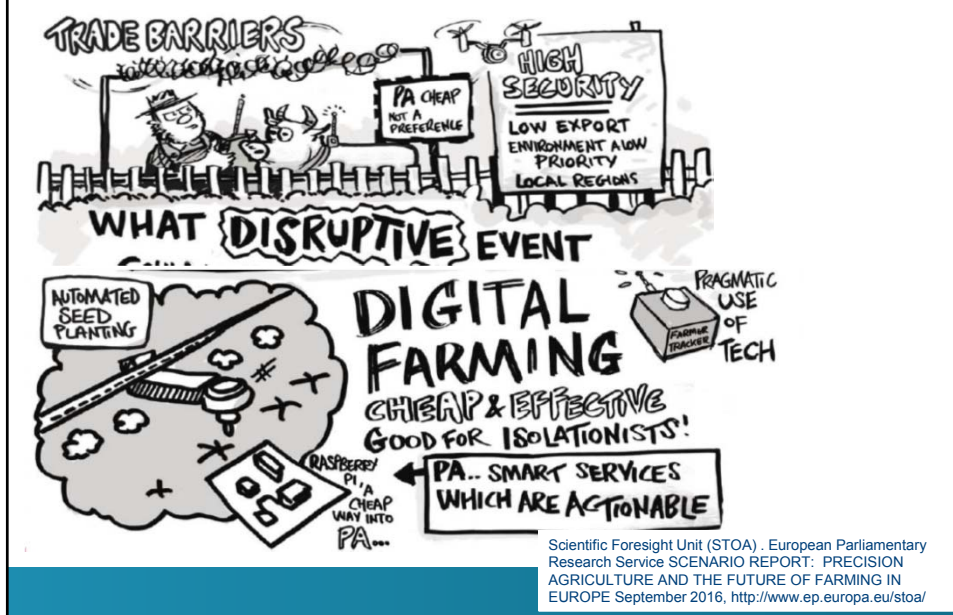
Economic optimism scenario



Global sustainable development scenario



Regional competition scenario



Regional sustainable development scenario



4 grand challenges: tomorrow's business



Food & nutrition security



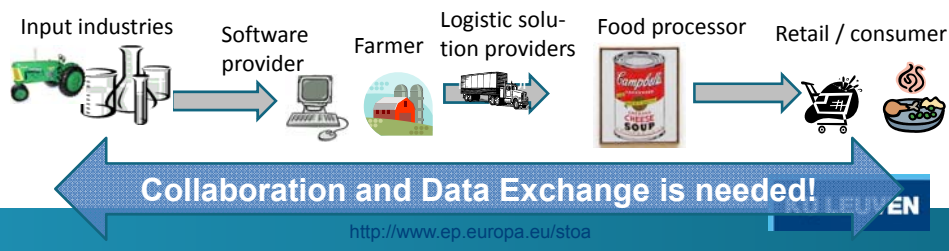
Climate change



Environmental issues



Healthy diet for a healthy life



EIT-Food : *FoodConnects*

Sustainable Supply Chain from Resources to Consumers

- *put Europe at the centre of a global revolution in food innovation and production.*
- *by delivering products, services and ideas that will contribute to the safety and sustainability of food across Europe.*
 - Developing new talents
 - Delivering business creation and acceleration support
 - Create consumer-valued food for healthier nutrition

EIT: European Institute of Technology

KU LEUVEN

EIT-Food : *FoodConnects*

Sustainable Supply Chain from Resources to Consumers

EIT Food Innovation Hubs (Co-location Centres)

EIT Food has formed five Co-location Centres across Europe:

- Leuven – CLC West (Belgium, France, Switzerland)
- London – CLC North-West (UK, Ireland, Iceland)
- Madrid – CLC South (Spain, Italy, Israel)
- Munich – CLC Central (Germany, The Netherlands)
- Warsaw – CLC North-East (Poland, Finland)

List of Partners per Country¹²

Belgium:

1. *Etablissements Franz Colruyt NV (Business / Industry)*
2. *European Food Information Council AISBL (public administration / NGO)*
3. *Katholieke Universiteit Leuven (Higher Education Institution)*
4. *Puratos NV (Business / Industry)*

50 partners from 13 countries

KU LEUVEN

EIT-Food : *FoodConnects*

Sustainable Supply Chain from Resources to Consumers

EIT- Food aims to, among others:

- Support the creation of 350 start-ups within seven years
- Train over 10 000 graduates from EIT-labelled Master and post-graduate programmes over seven years
- Develop 290 new or improved products, services, and processes by 2024
- Decrease greenhouse-gas emissions in the European food system by 40% by 2030

KU LEUVEN

